



East Berkshire Annual General Meeting

Tuesday, 20 October, 2020

Start: 3.15pm

Please turn off your video and mute your microphone for the start of the meeting.



Meet the team

NHS

East Berkshire
Clinical Commissioning Group



Dr Andy Brooks
Clinical Chief Officer



Dr Lalitha Iyer
Medical Director,
Frimley
Collaborative



Emma Boswell
Executive Director of
People and
Innovation, Frimley
Collaborative



Rob Morgan
Executive Director of
Finance, Frimley
Collaborative



Sarah Bellars
Executive Director of
Nursing, Frimley
Collaborative

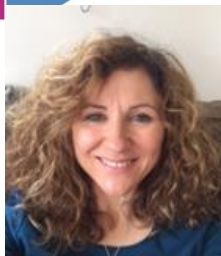
Working together to deliver excellent and sustainable healthcare



Meet the team



East Berkshire
Clinical Commissioning Group



Fiona Slevin-Brown
Executive Managing
Director Bracknell
Forest



Caroline Farrar
Executive Place Managing
Director, Royal Borough of
Windsor and Maidenhead
(RBWM)



Tracey Faraday-Drake
Executive Place Managing Director
Slough



Dr Martin Kittle
Clinical Lead
Bracknell Forest



Dr Huw Thomas
Clinical Lead
RBWM



Dr Jim O'Donnell,
Clinical Lead
Slough

Working together to deliver excellent and sustainable healthcare



Thank you for joining

The meeting will start shortly.

Please could you ensure that your camera and microphone are turned off.





Do you have a question?

After you have heard from all our presenters, we will open the chat box function to take live questions. We will also be answering questions that were submitted in advance.



East Berkshire CCG Annual General Meeting

20 October 2020



Agenda

- 1. Introduction by Dr Andy Brooks**
- 2. Presentation of the Annual Report and Accounts**
 - i. Look back on 2019-2020
 - ii. Highlight on Young Health Champions
 - iii. How our budget was spent
- 3. Responding to the Covid-19 pandemic**
- 4. Looking ahead**
- 5. Questions to the CCG**



Dr Andy Brooks

Clinical Chief Officer & GP

Frimley Collaborative

The Frimley Collaborative is a partnership between East Berkshire, Surrey Heath and North East Hampshire and Farnham CCGs.



Looking back at 2019-2020

Dr Lalitha Iyer
Medical Director



Looking back at 2019-2020

- ✓ Once again awarded an 'Outstanding' rating by NHS England.
- ✓ Working closely with our local authorities across East Berkshire, to deliver on Health and Wellbeing Priorities.
- ✓ Came together with Surrey Heath CCG and North East Hampshire and Farnham CCG to form the Frimley Collaborative of Clinical Commissioning Groups with joint Exec Team



Outreach to homeless communities

- Homeless outreach service - provides dedicated GP and nurse support for this vulnerable group within each Place
- The services work collaboratively with local charitable organisations to
- Looking after their basic health needs
 - promote and provide flu vaccinations
 - screening and treatment for Hepatitis C
 - exploring opportunities to broaden the service to encompass areas of dentistry and podiatry
 - extending the support to encompass other transient groups such as gypsies, travellers and sex workers.



Leading the way



The core aim of the Slough project is to strengthen the ability of individuals and communities to work in partnership with the NHS, local authority, public health and voluntary/community sector organisations to protect themselves from the direct and indirect harms of the virus and provide a holistic approach to support the population of Slough.

Working together to deliver excellent and sustainable healthcare



Re-designing services to suit patient and clinical needs

Ophthalmology Service and New care pathway

- Successful implementation of a Hydroxychloroquine screening service delivered by Evolutio
- Network of trained and fully equipped community optometrist practices and an Evolutio managed mobile screening unit, in various locations across the East Berkshire geographical area for closer access to patients home.



Diabetes Low Calorie Diet Programme

- During 19/20 our Integrated Care System were successfully chosen to pilot the NHSE Free Diabetes Low Calorie Diet programme
- Support Type 2 Diabetes patients with a holistic approach and an opportunity to achieve remission and includes motivational, dietetic support
- The service has received 19 referrals across East Berkshire in 2 months since launched.



Integrated Care



Aim: to provide better care outcomes and experience for people receiving integrated care.

Anticipatory Care Approach: GPs identify patients with complex physical, mental or social care needs

Integrated health and social care teams provide services to patients in their own homes for ongoing care or short term support

Integrated Frailty Liaison Teams in the community and acute frailty service to provide fast same day response

Discharge to assess model out of the acute hospital - **‘Principle of Home First’** - same day response to patients and follow up if required.

Providing enhanced support to care homes through the ‘Care Homes Quality Team’ which includes working closely with social care partners to support care providers and access to interim support in community beds.

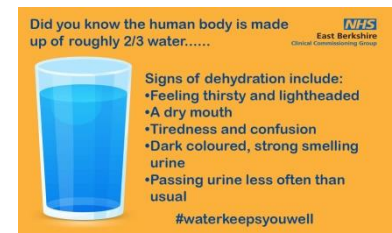
Community beds provide enhanced sub acute care and step down/step up re-ablement.

Impact: includes fewer non-elective admissions and fewer Accident and Emergency (A&E) attendances, Reductions in acute LOS and delays in discharge



Prevention and self care

- Supporting people to live healthy lives is a priority for the CCG. We work with our partners to promote wellness, prevent ill-health, identify improvements in lifestyle choices and ensure effective support is available throughout the community.
- Self-care toolkit focusing on key areas where clinicians felt patients needed additional support to manage their conditions. This programme of work was shortlisted as part of the **Self-care 2019 national award**. We aim to replicate the toolkit again this year.





Prevention and self care Outreach to schools

- Spoke to over 500 children about when to visit a GP and importance of washing hands!
- Gave children at 13 schools across

East Berkshire

- Bookmarks
- Flyers
- Stickers





Young Health Champions video

Click [here](#) to view



Finance 2019/20

Debbie Fraser
Deputy Director of Finance



Annual Report and Accounts

Performance Report (p21-77)

The purpose of the performance section of the annual report is to provide information about the CCG, its performance, its strategic priorities and the principal risks that it faces.

Accountability Report (p78-153)

- Members Report
- Statement of Accountable Officer Responsibilities
- Annual Governance Statement
- Remuneration Report and Staff Report

Financial Statements (p154 to end)

- Report and Opinion from independent Auditor
- Statement of Comprehensive Net Expenditure
- Statement of Financial Position
- Statement of changes in taxpayers equity
- Statement of cash flows
- Notes to the Accounts (incl Accounting Policies)

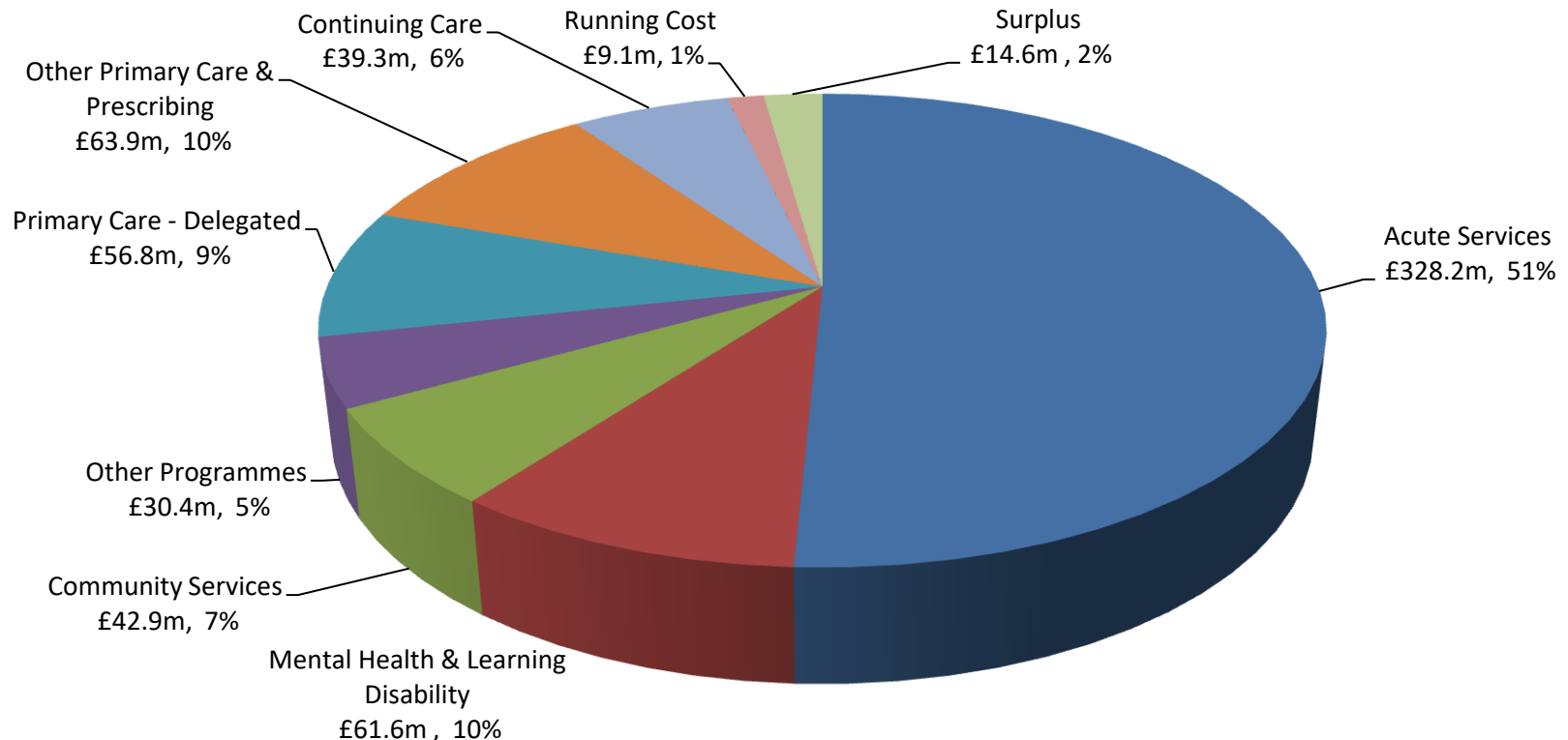


East Berkshire CCG

Expenditure 2019/20 £632m

Per person: per year = £1,338, per day = £3.66

NHS East Berkshire CCG Spend 2019/20



Working together to deliver excellent and sustainable healthcare



CCG Financial Duties

Financial duties...

Revenue Resource Limit

Expenditure on “running costs”

Cash in the bank at year end

Unqualified audit report

Unqualified regularity opinion

Unqualified “value for money” opinion

East Berkshire CCG	
Revenue Resource Limit	✓
Expenditure on “running costs”	✓
Cash in the bank at year end	✓
Unqualified audit report	✓
Unqualified regularity opinion	✓
Unqualified “value for money” opinion	✓



Our Covid-19 response

Sarah Bellars
Executive Director of Quality and Nursing
Director of Infection, Prevention and
Control (DIPC)



Responding to the Covid-19 pandemic

NHS

East Berkshire
Clinical Commissioning Group

**Faster
decision
making**

**More use of
technology –
professionally
and personally**

**Speed of
change
(reactive
and
proactive)**

**National policy and
guidance increased**

**Our organisational structure and
processes changed very rapidly –
Covid specific response,
redeployment, working from home.**



Shahnaz Khan
General Practice Nurse



Dr Rohail Malik

"We have been here throughout lockdown for you.

"The way we work has changed for all of us.

"We have been using full telephone triage and will continue to do that for now but we do see patients when needed in a safe manner.

"It's been very interesting to see how much work can be carried out via telephone and video consultations.

"Please do contact the relevant health professionals when needed as we are still all here for you."

For more information, visit
<https://www.frimleyhealthandcare.org.uk/accesstoprimarycare>

**Anant Sachdev**

Mask on, gloves on, visor on

"Do come in. Please take some of the sanitiser and be assured that we wipe down all surfaces after each patient, making it as safe as possible for us all. Welcome to the new normal family GP practice, what can I do for you?"

"This week, I have had many face-to-face appointments and numerous telephone and video consultations. This is the new way of 'seeing your doctor or nurse' for now. It works.

"We have made many referrals, organised further tests, completed many medication and health reviews, carried out minor surgery (cysts and skin lesions) and given many injections including childhood vaccinations. We have restarted doing smears and coils as well as implants. So, services are beginning to resume, albeit slightly innovatively. Hospitals too are seeing patients, in a safe way, and we have organised x-rays, tests and referrals – everyone is thinking of patient safety and minimising any risks.

"This is the 'new norm'. The crisis has made us think creatively to help you. Illnesses don't wait or pause, so we are urging patients to seek help earlier rather than allowing non-covid illnesses to progress. The NHS remains here for you."

For more information, visit

<https://www.frimleyhealthandcare.org.uk/accesstoprimarycare>



Health recovery: what's next

- We have transformed how we work – demonstrating rapid learning and effective working with our Covid-19 Pandemic response.
- Some of these changes need to continue. This includes continued roll-out of telephone or online consultations for hospitals outpatient appointments and eConsult for GP practices as well as new emergency care for those with mental health issues.
- When the spread of the virus was increasing at a significant rate in March, we needed to make sure there was enough bed capacity and staff to cope with the predicted surge in demand.
- Over the summer, Health and care workers across Frimley Health and Care have been focussed on restarting some of the services that were suspended as part of the national Covid-19 effort.
- We have learned a lot since the beginning of Covid-19, and are planning to keep services safe and open as far as possible even if there is a second surge.
- We will need to continue to be flexible to ensure we are able to manage the ongoing Covid-19 situation in the best possible way. Services may be delivered in different ways and in different places than previously, and if Covid-19 cases continue to rise then these services may need to be reduced once more.

I want to thank you for your support to the NHS and our staff.

Working together to deliver excellent and sustainable healthcare



Dr. Martin Kittel

Clinical Lead and GP

Bracknell Forest



Dr. Huw Thomas

Clinical Lead and GP

Royal Borough of Windsor and Maidenhead



Dr Jim O'Donnell

Clinical Lead and GP

Slough



Do you have a question?

The chat box is now open so we can take live questions.





Thank you