

# Frimley CCG Prescribing Newsletter

"Making the most of medicines"

Volume 12 Issue 10

November 2021

THANKYOU

Frimley Medicines Optimisation Team thank  
you for continuing to use the SCAN  
Microguide

#AntibioticGuardian  
#KeepAntibioticsWorking

## Contents

<b>GENERAL UPDATE</b>	<b>2</b>
<a href="#">MOT'ea Save the date: Tuesday 14th December 2021</a>	<a href="#">2</a>
<a href="#">Medicines associated with dependence or withdrawal symptoms: safe prescribing and withdrawal management for adults</a>	<a href="#">2</a>
<a href="#">Open consultation on original pack dispensing and supply of medicines containing sodium valproate</a>	<a href="#">2</a>
<a href="#">NHS England to review HRT charges</a>	<a href="#">2</a>
<b>GUIDANCE/EVIDENCE UPDATE</b>	<b>2</b>
<a href="#">Useful SNOMED codes</a>	<a href="#">2</a>
<a href="#">Antibiotic Guidelines: SCAN MicroGuide Latest Updates</a>	<a href="#">3</a>
<a href="#">November 2021 NICE update</a>	<a href="#">3</a>
<a href="#">Electronic repeat dispensing (eRD) Update</a>	<a href="#">4</a>
<b>SAFETY UPDATE</b>	<b>4</b>
<a href="#">Introducing the ICS Medicines Safety Pharmacist</a>	<a href="#">4</a>
<a href="#">November 2021 NICE update</a>	<a href="#">5</a>
<b>JOURNAL</b>	<b>5</b>
<a href="#">Effect of C-reactive protein to guide antibiotic prescribing for lower respiratory tract infections in nursing home residents</a>	<a href="#">5</a>
<b>FORMULARY</b>	<b>6</b>
<a href="#">Inhaler Selection Guides</a>	<a href="#">6</a>
<a href="#">Anticoagulation Prescribing Guidance Overview</a>	<a href="#">6</a>
<b>SUPPLY</b>	<b>6</b>
<a href="#">Champix® (varenicline) 0.5mg and 1mg tablets – Supply Disruption</a>	<a href="#">6</a>
<a href="#">Diazepam RectTubes® 2.5mg Rectal Solution - discontinued</a>	<a href="#">7</a>
<a href="#">DHSC and NHSE/I online Medicines Supply Tool</a>	<a href="#">7</a>
<b>Medicines Optimisation in Care Homes (MOCH)</b>	<b>7</b>
<a href="#">MOCH– Good Practice Guidance for care homes</a>	<a href="#">7</a>
<b>COVID RELATED GUIDANCE</b>	<b>8</b>
<b>CONTACT DETAILS FOR THE MEDICINES OPTIMISATION TEAM</b>	<b>9</b>

+++Contacting the Medicines Optimisation Team+++ We are currently not office based so will not be able to receive any written communication by post. If GP Practices need to make contact with the team please could they could either contact via [frimleyccg.prescribing@nhs.net](mailto:frimleyccg.prescribing@nhs.net) or their usual Medicines Optimisation pharmacist – [mobile phone numbers and emails, as per the CONTACTS page of the newsletter.](#)

## MOT'ea Save the date: Tuesday 14<sup>th</sup> December 2021

Please join us for our next MOTea session at 1pm on Tuesday 14<sup>th</sup> December 2021. This session will cover Lipid Management and Pharmacist Early Careers Pathway.

A MS TEAMS invite will be sent soon. Not on the distribution list? then e-mail: [tim.langran@nhs.net](mailto:tim.langran@nhs.net)

### Medicines associated with dependence or withdrawal symptoms: safe prescribing and withdrawal management for adults

Consultation currently open for new NICE guidelines in development. The guideline covers prescribing and managing withdrawal from opioids, benzodiazepines, gabapentinoids, Z-drugs and antidepressants.

More information [here](#). The consultation closes 5pm, 2 December 2021

### Open consultation on original pack dispensing and supply of medicines containing sodium valproate

DHSC consultation on proposals to allow pharmacists to dispense prescription medicines (excluding controlled drugs) in their original packaging and require it for medicines containing valproate.

Further information [here](#). Submit your views online here until 11:45am on Monday 13 December.

### NHS England to review HRT charges

As reported in the general media ([BBC](#)), NHS England are to review how prescriptions charges are applied to prescriptions for Hormone Replacement Therapy (HRT) treatments.

The current NHS prescription levy is £9.35 with 3 and 12 month Prepayment Certificates available to assist people on regular medication. HRT however has always been an area that causes some confusion where some treatments that contain 2 different treatment regimens are charged at two fees (£18.70) but when combined into one tablet there is only one.

It is being proposed that fees are charged on an annual basis irrespective of the treatment used or how it is prescribed. NHS England are being asked to investigate what changes can be made to implement the charging changes.

In the short term, clinicians may wish to consider issuing extended durations of supply (consider 6 rather than 12 months to help maintain the supply chain) to women who are established and stable on their preferred treatment. N.B. The first script should remain of shorter duration until the treatment is assessed as acceptable and effective to avoid considerable wastage.

**Action: Clinicians should be aware of this imminent change.**

[BACK TO CONTENTS PAGE](#)



#### GUIDANCE UPDATE

### SNOMED Codes for Valproate Pregnancy Prevention Programme

Practices are encouraged to code patients enrolled onto the valproate pregnancy prevention programme. Codes include:

- *Pregnancy prevention started/ declined/ not needed/ discontinued*
- *Did not attend pregnancy prevention programme*

- *Pregnancy prevention programme declined by parent/ care giver*

## SNOMED code for PCN DES IIF 2021/22: ES-01 MDI percentage in patients over 12 years.

If as a result of a clinical review and a shared decision-making conversation switching a patient away from a MDI to a DPI is not appropriate, an exception reporting code has recently been published.

- *Dry powder inhaler not indicated.*

**ACTION: Please be aware of these SNOMED codes.**

[BACK TO CONTENTS PAGE](#)

## Antibiotic Guidelines: SCAN MicroGuide Latest Updates

Please be aware that the old host website for SCAN guidelines ([www.nhsantibioticguidelines.org.uk](http://www.nhsantibioticguidelines.org.uk)) has been taken down and is no longer accessible.

The SCAN antibiotic guidelines can be accessed at <https://viewer.microguide.global/SCAN/SCAN>. You will need to register yourself under the medical organisation 'South Central Antimicrobial Network' and select the SCAN guidance. A link to SCAN MicroGuide is also to be found in DXS.

**Action: Please access SCAN microguide via <https://viewer.microguide.global/SCAN/SCAN>. Mobile phone APP access continues unchanged.**

[BACK TO CONTENTS PAGE](#)

## November 2021 NICE update

NICE have published new or updated guidance for the month of November 2021. This month there are four guidelines and one COVID-19 rapid guideline that impact upon primary care.

[The Heart valve disease presenting in adults](#): investigation and management guideline has been published. It covers investigation and management of heart valve disease presenting in adults. It aims to improve quality of life and survival for people with heart valve disease through timely diagnosis and appropriate intervention.

[The Acute heart failure](#): diagnosis and management guideline has been updated. Recommendations on valvular surgery and percutaneous intervention have been withdrawn and replaced by the new guideline above.

[The Type 2 diabetes in adults](#): management guideline has been updated. The update reviewed the evidence and made new recommendations for SGLT2 inhibitors for adults with type 2 diabetes and chronic kidney disease.

[The Chronic kidney disease](#): assessment and management guideline has been updated. The guidance on SGLT2 inhibitors for adults with type 2 diabetes and chronic kidney disease has been updated and links to the Type 2 diabetes in adults guideline.

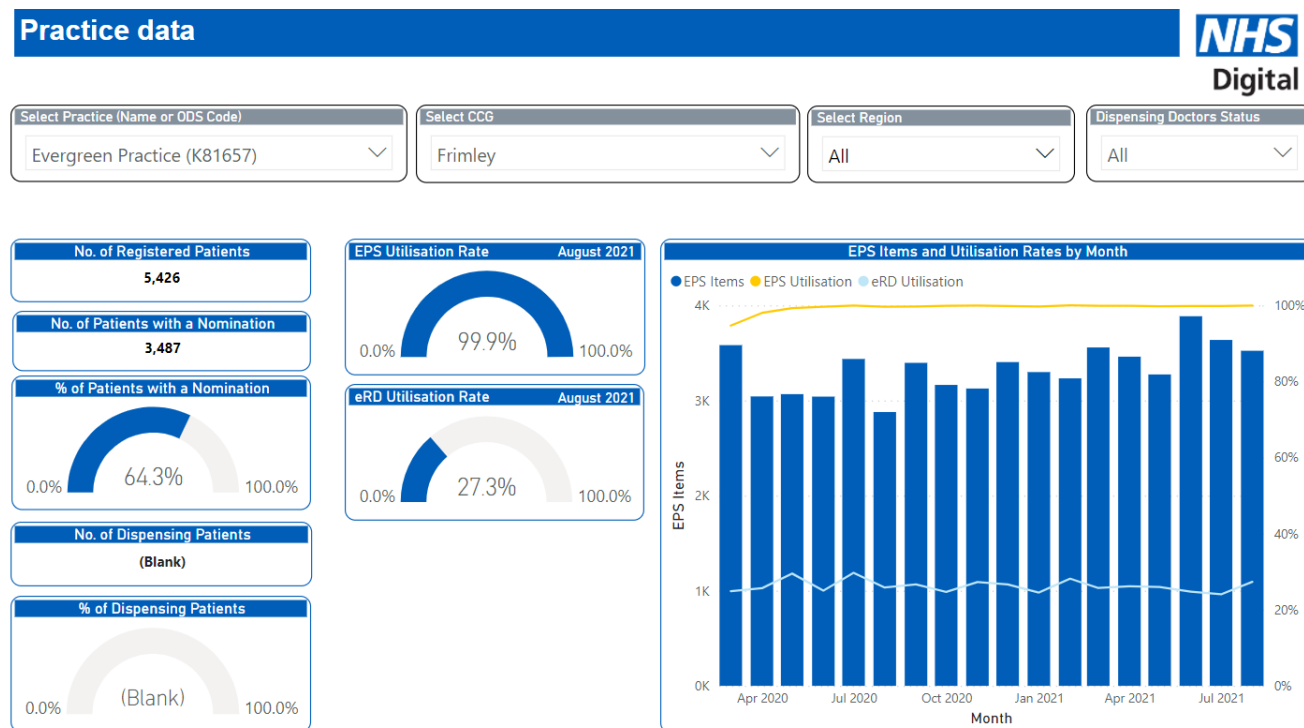
**Action: Clinicians should be aware of this month's new guidance and implement any necessary changes to practice.**

[BACK TO CONTENTS PAGE](#)

## Electronic repeat dispensing (eRD) Update

Practice eRD rates may be tracked [here](#) on the national dashboard.

Example picture of what the dashboard will drill down to:



The appendix at the end of the newsletter shows rates as of August 2021 and many practices have been able to convert a significant number of scripts to eRD.

A reminder of the benefits of eRD include:

- Reduces footfall to the GP practice
- Reduces workload for prescribers allowing better prioritisation of resources
- Controlled management of the supply chain reducing the number of temporarily unavailable medicines
- Effective eRD can save up to 46 minutes a day of GP time
- If 80% of all repeats issued as repeat dispensing, 2.7 million GP hours could be saved

**Action:** Please consider using [eRD](#), in suitable patients, to help manage your repeat prescribing workloads. Access resources via the link [here](#). Please contact your CCG MO pharmacist for local materials and searches to identify patients.

[BACK TO CONTENTS PAGE](#)

### SAFETY UPDATE

## Introducing the ICS Medicines Safety Pharmacist

Jennie Fynn, from the CCG Medicines Optimisation team, has been appointed as the ICS Medicines Safety Pharmacist.

She will develop and lead the Medicines Safety programme across the Frimley ICS, working collaboratively with key stakeholders and partners across the system to promote and embed medicines

safety into all practice thus contributing to the wider Medicines Optimisation workstream and ICS patient safety agenda.

Jennie would like to hear from frontline health and social care professionals about the challenges they face with safe medicines use. Your experiences and views will help develop an effective ICS wide Medicines Safety programme. Please contact her on [Jennifer.fynn@nhs.net](mailto:Jennifer.fynn@nhs.net)

[BACK TO CONTENTS PAGE](#)

## Drug Safety Update - November 2021

There is a new pre-vaccination checklist for the yellow fever vaccine (Stamaryl®). The standardised pre-vaccination checklist has been introduced to ensure the yellow fever vaccine is indicated for the intended travel destination and to enable vaccinators to identify existing contraindications or precautions in individuals before vaccination.

Emerade® adrenaline auto-injectors have been re-supplied to the market after resolution of an issue that caused some devices to fail to activate and deliver adrenaline. Prescribers are reminded to support safe and effective use with training and advice specific to their prescribed adrenaline auto-injector.

The latest COVID-19 vaccine safety information including regulatory approval for molnupiravir (Lagevrio®) and summaries of Yellow Card reporting noting that Guillain-Barré syndrome (GBS) is now a recognised and very rare side effect for Vaxzevria (previously COVID-19 Vaccine AstraZeneca).

**Action: Clinicians should be aware of this month's new guidance and implement any necessary changes to practice.**

[BACK TO CONTENTS PAGE](#)

	<b>JOURNAL</b>
---	----------------

### Effect of C-reactive protein to guide antibiotic prescribing for lower respiratory tract infections in nursing home residents

A cluster randomised controlled trial evaluated whether C reactive protein point-of-care testing (CRP POCT) safely reduces antibiotic prescribing for lower respiratory tract infections in nursing home residents; the UPCARE study of 11 nursing home organisations in the Netherlands.

Nursing homes allocated to the intervention group had access to CRP POCT. The control group provided usual care without CRP POCT for patients with suspected lower respiratory tract infections. The primary outcome measure was antibiotic prescribing at initial consultation, with various secondary outcome measures.

Antibiotics were prescribed at initial consultation for 84 (53.5%) patients in the intervention group and 65 (82.3%) in the control group. The between group difference in antibiotic prescribing at any point from initial consultation to follow-up was 23.6%.

Differences in secondary outcomes between the intervention and control groups were 4.4% in full recovery rates at three weeks (86.4% v 90.8%), 2.2% in all cause mortality rates (3.5% v 1.3%), and 0.7% in hospital admission rates (7.2% v 6.5%). The odds of full recovery at three weeks, and the odds of mortality and hospital admission at any point did not significantly differ between groups.

**Conclusions CRP POCT for suspected lower respiratory tract infection safely reduced antibiotic prescribing compared with usual care in nursing home residents. The findings suggest that**

implementing CRP POCT in nursing homes might contribute to reduced antibiotic use in this setting and help to combat antibiotic resistance.

Ref: [BMJ 2021;374:n2198](#)

[BACK TO CONTENTS PAGE](#)

	<h2>FORMULARY UPDATE</h2>
---	---------------------------

### Inhaler Selection Guides

Please see [here](#) for the new *Primary Care Medicines Management of ASTHMA-preferred inhalers* guideline.

This document

- lists preferred choices of inhalers for asthma (other inhalers are available on the Frimley formulary)
- highlights those which have a lower carbon footprint
- provides hints and tips for selecting the best device with the patient
- reminds prescribers to prescribe inhalers by brand
- advises that patients can return empty, part used, or unused inhalers and cartridges and should be returned to pharmacies for safe disposal

There is a similar existing document for COPD inhalers available [here](#)

**Action: Please be aware of these documents which help support appropriate selection of inhalers and the move towards “greener” choices (when appropriate for the patient).**

[BACK TO CONTENTS PAGE](#)

### Anticoagulation Prescribing Guidance Overview

Frimley Health and Care ICS have produced a cross directorate guide summarising anti-coagulant use ([here](#)).

The guide

- summarises the usual duration and type of anticoagulant (ie, LMWH/OAC/warfarin) depending on the indication, where the initial prescription and any continuing supplies are to be issued from
- lists the information that will be given to these patients on discharge
- gives contact numbers for further queries about these courses

The document does not specify the choice of agent (ie, which LMWH or DOAC). Please consult the ICS [formulary](#) before choosing which agent to prescribe.

**Action: please be aware of this document which may help clarify queries in this area**

[BACK TO CONTENTS PAGE](#)

	<h2>SUPPLY ISSUES</h2>
---	------------------------

### Champix® (varenicline) 0.5mg and 1mg tablets – Supply Disruption

We have recently been informed that there is no date for resupply of Champix® (varenicline) or availability of varenicline products until further notice.

- The MHRA recalled all strengths of Champix® tablets on 14th October 2021 at pharmacy and wholesaler level.
- There are currently no alternative suppliers of varenicline tablets.
- No new patients should be initiated on Champix® (varenicline) products.

**Action: Patients currently prescribed this treatment will require review. They should be advised to purchase NRT (unless contraindicated) and referred to local stop smoking services as appropriate.**

[BACK TO CONTENTS PAGE](#)

## Diazepam RecTubes® 2.5mg Rectal Solution - discontinued

Diazepam RecTubes® 2.5mg have been discontinued in the UK with remaining supplies expected to be exhausted by March 2022.

Prescribers should not initiate new patients on Diazepam RecTubes® 2.5mg. Alternative parenteral and non-parenteral preparations remain available.

Alternate non-parenteral preparations which can be considered are:

Midazolam (2.5mg/ 0.5mL, 5mg/ 1mL, 7.5mg/ 1.5mL, 10mg/ 1mL and 10mg/2mL) oromucosal solution pre-filled syringes- licensed for the treatment of prolonged, acute, convulsive seizures in infants, toddlers, children and adolescents (from 3 months to < 18years). It is used off label in younger children, including neonates. Please refer to BNFC or local guidelines for dosing information in this younger age group.

Diazepam 5mg/ 2.5mL RecTubes®- If the above option is not considered appropriate, clinicians can consider a part dose to be extracted via a syringe or rectal straw (off-label). Clinicians should refer to local guidance for consideration.

Diazepam 5mg/ 2.5mL rectal solution remain available and can support an uplift in demand.

**Action: Review all patients prescribed Diazepam RecTubes® 2.5mg and consider alternative preparations where appropriate. Patients and carers should be advised to update epilepsy passport/ child's emergency care plans with any changes.**

[BACK TO CONTENTS PAGE](#)

## DHSC and NHSE/I online Medicines Supply Tool

- DHSC and NHSE/I have launched an online [Medicines Supply Tool](#)
- To access the Tool you will be required to register with the Specialist Pharmacy Service (SPS) website and be logged in due to the commercially sensitive nature of the information

**Action: Access the supply tool [here](#).**

[BACK TO CONTENTS PAGE](#)



### Medicines Optimisation in Care Homes (MOCH) Corner

## MOCH– Good Practice Guidance for care homes

The MOCH (Medicines Optimisation in Care Homes) team have been reviewing existing and developing new Good Practice Guidance (GPGs) for all care homes within the Frimley ICS. All new GPG documents, once ratified by the Medicines Optimisation Board, can be found on the Frimley CCG MOCH webpage, link: <https://www.frimleyccg.nhs.uk/policies-and-documents/medicines-optimisation/care-homes>



The MOCH team deliver 'Marvellous Medicines and Nutritional Nuggets' training on the recently approved GPGs to all care homes across Frimley.

GPG documents most recently added include:

- [Good Practice Guidance: The Use of Over the Counter \(OTC\) medicines and Homely Remedies](#)
- [Good Practice Guidance: Supporting people to self-care in care homes](#)
- [Good Practice Guidance for Care Homes: Fridge Temperature Monitoring](#)
- [Good Practice Guidance: Repeat medication ordering using Proxy Access in care homes](#)
- [Good Practice Guidance Seasonal 'flu vaccination for care home residents](#)

MOCH team resources (referral pathway and referral to the MOCH team form) can also be found within the care homes section:

[MOCH \(Medicines Optimisation in Care Homes\) resources \(SMR/referrals\) \(frimleyccg.nhs.uk\)](#)

[BACK TO CONTENTS PAGE](#)

	<h2>COVID-19 RELATED GUIDANCE UPDATE</h2>
---	---

- [The COVID-19 rapid guideline](#): managing the long-term effects of COVID-19 guideline has been updated. The update makes new recommendations and updates existing recommendations in several areas including identification, planning care, multidisciplinary rehabilitation and follow up. The list of common symptoms was also updated, emphasising that these may be different for children.
- Information about rare side effects associated with COVID-19 vaccination focussing on blood clotting, myocarditis and Guillain-Barre syndrome. Read about it [here](#).
- [Green Book COVID 19 Chapter](#) Updated to include more background on variants and clinical trials in younger children, advice on offering boosters to 18 to 39 year olds, advice on boosters for severely immunosuppressed after a third dose, advice on second doses of vaccine for children aged 12 to 15 years and potential flexibility around schedules in under 18s in a changing epidemiological situation. Please note It is likely that the PGD and National Protocol will take about two weeks to be updated. Until then, vaccination of anyone outside of the cohorts covered by the existing versions can only happen via a patient specific direction. If a site does not have a suitable prescriber then they won't be able to vaccinate walk in patients who are outside of the current cohorts.



20211130 Current  
Cohort Eligibility\_O1

•

[BACK TO CONTENTS PAGE](#)



**CONTACT DETAILS FOR THE MEDICINES OPTIMISATION TEAM**

**Aldershot Centre for Health, Hospital Hill, Aldershot, Hants GU11 1AY**  
**King Edward VII Hospital, St Leonards Rd, Windsor SL4 3DP**  
**Surrey Heath House, Knoll Road, Camberley, Surrey, GU15 3HD**

	Mobile	Email
Director of Medicines Optimisation <b>Vacant position</b>		
Jennie Fynn ICS Medicines Safety Pharmacist	<b>07795 857584</b>	<a href="mailto:jennifer.fynn@nhs.net">jennifer.fynn@nhs.net</a>
Tim Langran Interim Associate Director Medicines Optimisation	<b>07775 010727</b>	<a href="mailto:tim.langran@nhs.net">tim.langran@nhs.net</a>
Mohammed Asghar Prescribing Governance Pharmacist, Frimley ICS	<b>0300 6155415</b>	<a href="mailto:mohammed.asghar@nhs.net">mohammed.asghar@nhs.net</a>
Lesley Morson Senior Administrator	<b>0790 1233107</b> <b>Mon-Fri</b>	<a href="mailto:lesley.morson@nhs.net">lesley.morson@nhs.net</a>
<b>PHARMACY TEAMS AT PLACE</b>		
<b>BRACKNELL FOREST</b>		<a href="mailto:frimleyccg.prescribing@nhs.net">frimleyccg.prescribing@nhs.net</a>
Melody Chapman Place Lead Medicines Optimisation Pharmacist	<b>07826 533736</b>	<a href="mailto:melody.chapman@nhs.net">melody.chapman@nhs.net</a>
Caroline Hailstone Medicines Optimisation Pharmacist (Bracknell, Slough and RBWM places)	<b>07768 020809</b>	<a href="mailto:caroline.hailstone@nhs.net">caroline.hailstone@nhs.net</a>
<b>NORTH EAST HANTS AND FARNHAM</b>		<a href="mailto:frimleyccg.medicinesmanagement@nhs.net">frimleyccg.medicinesmanagement@nhs.net</a>
Clare Carter Medicines Optimisation Pharmacist	<b>07584 204875</b>	<a href="mailto:clare.carter3@nhs.net">clare.carter3@nhs.net</a>
Sarah Ellis-Martin Place Lead Medicines Optimisation Pharmacist	<b>07717 779366</b>	<a href="mailto:sarah.ellis-martin@nhs.net">sarah.ellis-martin@nhs.net</a>
Simon Smith Medicines Optimisation Pharmacy Technician	<b>07795 335076</b>	<a href="mailto:simon.smith22@nhs.net">simon.smith22@nhs.net</a>
Sarah Sneath Medicines Optimisation Pharmacist	<b>07833 094102</b>	<a href="mailto:sarah.sneath@nhs.net">sarah.sneath@nhs.net</a>
<b>ROYAL BOROUGH OF WINDSOR AND MAIDENHEAD</b>		<a href="mailto:frimleyccg.prescribing@nhs.net">frimleyccg.prescribing@nhs.net</a>
Dawn Best Place Lead Medicines Optimisation Pharmacist	<b>07825 691163</b>	<a href="mailto:dawnbest@nhs.net">dawnbest@nhs.net</a>
<b>SLOUGH</b>		<a href="mailto:frimleyccg.prescribing@nhs.net">frimleyccg.prescribing@nhs.net</a>
Tim Langran Place Lead Medicines Optimisation Pharmacist	<b>07775 010727</b>	<a href="mailto:tim.langran@nhs.net">tim.langran@nhs.net</a>

Caroline Pote Medicines Optimisation Pharmacist (Slough and RBWM places)	07824 476439	<a href="mailto:caroline.pote@nhs.net">caroline.pote@nhs.net</a>
<b>SURREY HEATH</b>		<a href="mailto:frimleyccg.prescribing@nhs.net">frimleyccg.prescribing@nhs.net</a>
Baljinder Ahitan Place Medicines Optimisation Pharmacist	07391 414393	<a href="mailto:baljinder.ahitan1@nhs.net">baljinder.ahitan1@nhs.net</a>
Noreen Devanney Place Medicines Optimisation Pharmacist	07894 599647	<a href="mailto:noreen.devanney@nhs.net">noreen.devanney@nhs.net</a>
Naeed Hussain (on career break) Place Medicines Optimisation Pharmacist	07595 087855	<a href="mailto:naeed.hussain@nhs.net">naeed.hussain@nhs.net</a>
Leena Nanavati Place Medicines Optimisation Pharmacist (including support to Care Homes)	07917 211006	<a href="mailto:leena.nanavati@nhs.net">leena.nanavati@nhs.net</a>
Gemma Tierney (on maternity leave) Medicines Optimisation Pharmacy Technician	07748 623856	<a href="mailto:gemma.tierney@nhs.net">gemma.tierney@nhs.net</a>
<b>MEDICINES OPTIMISATION CARE HOMES (MOCH) PHARMACY TEAM</b>		<a href="mailto:Frimleyccg.MOCH@nhs.net">Frimleyccg.MOCH@nhs.net</a>
Sally Clarke Medicines Optimisation Care Homes Pharmacist	07747 007934	<a href="mailto:sally.clarke6@nhs.net">sally.clarke6@nhs.net</a>
Sundus Jawad ICS Lead Medicines Optimisation Care Homes Pharmacist	07909 505658	<a href="mailto:sundus.jawad@nhs.net">sundus.jawad@nhs.net</a>
Zoe Lewis (on maternity leave) Medicines Optimisation Care Homes Pharmacy Technician	07774 334737	<a href="mailto:zoe.lewis9@nhs.net">zoe.lewis9@nhs.net</a>
Simerjyot Mudhar Care Homes Pharmacist	07425 634218	<a href="mailto:s.mudhar@nhs.net">s.mudhar@nhs.net</a>
Dhara Thacker Medicines Optimisation Care Homes Pharmacy Technician	07776244842	<a href="mailto:dhara.thacker2@nhs.net">dhara.thacker2@nhs.net</a>
Jeremy Woolf EMIS Proxy Admin Support	07880411633	<a href="mailto:Jeremy.woolf1@nhs.net">Jeremy.woolf1@nhs.net</a>
<b>DIETITIANS</b>		
Alison Carr Senior Dietitian Community Nutritional Support	07342 067927	<a href="mailto:a.carr@nhs.net">a.carr@nhs.net</a>
Cathy Macqueen Prescribing Support Dietitian	07825 437041 Mon-Tues	<a href="mailto:catherine.macqueen@nhs.net">catherine.macqueen@nhs.net</a>
Laura Sexton Senior Dietitian Community Nutrition Support	07423 238 239	<a href="mailto:laura.sexton@nhs.net">laura.sexton@nhs.net</a>

## OTHER USEFUL CONTACT DETAILS

**Controlled Drugs Accountable Officer (CDAO):** CDAO (Julie McCann) can be contacted via [england.southeastcdao@nhs.net](mailto:england.southeastcdao@nhs.net), noting that all general CD concerns, incidents and authorised witness requests should always be raised via [www.cdreporting.co.uk](http://www.cdreporting.co.uk). For non-CD medicines safety issues, use [julie.mccann3@nhs.net](mailto:julie.mccann3@nhs.net)

Appendix 1 eRD rates in Frimley CCG

GP Practice (ODS Code)	Registered Patients	% with nominated pharm	EPS Items	eRD Items	All Items	EPS Utilisation	eRD Utilisation (EPS Items)	eRD Utilisation (All Items)
The Village Medical Centre (K81082)	11019	59.50%	12487	6993	12655	98.70%	56.00%	55.30%
Ragstone Road Surgery (K81089)	3214	61.00%	5842	2860	5849	99.90%	49.00%	48.90%
Cordwallis Road Surgery (K81607)	3487	68.80%	4432	1780	4572	96.90%	40.20%	38.90%
Shreeji Medical Centre (K81085)	6927	73.90%	10638	4023	10872	97.80%	37.80%	37.00%
Crosby House Surgery (K81034)	11603	59.70%	11668	4393	11691	99.80%	37.60%	37.60%
Crondall New Surgery (J82628)	5458	42.90%	3608	1349	7344	49.10%	37.40%	18.40%
Downing Street Group Practice (H81088)	12618	70.00%	15953	5512	16178	98.60%	34.60%	34.10%
240 Wexham Road (K81645)	6945	68.70%	7841	2594	7964	98.50%	33.10%	32.60%
Manor Park Medical Centre (K81086)	10792	70.40%	13638	4493	14003	97.40%	32.90%	32.10%
Holly Tree Surgery (H81110)	6308	33.40%	4312	1384	8573	50.30%	32.10%	16.10%
Redwood House Surgery (K81097)	5872	65.40%	6680	2105	6746	99.00%	31.50%	31.20%
North Camp Surgery (J82630)	5791	60.70%	4988	1536	5095	97.90%	30.80%	30.10%
Dr Nabi (K81608)	5155	68.70%	5815	1707	5822	99.90%	29.40%	29.30%
Kumar Medical Centre (K81616)	5215	63.60%	5594	1615	5665	98.70%	28.90%	28.50%
Cookham Medical Centre (K81042)	7793	71.80%	8681	2411	8899	97.60%	27.80%	27.10%
Bharani Medical Centre (K81083)	13758	66.40%	18517	5115	19454	95.20%	27.60%	26.30%
Upper Gordon Road Surgery (H81075)	11549	66.10%	16576	4547	16834	98.50%	27.40%	27.00%
Evergreen Practice (K81657)	5426	64.30%	3523	963	3525	99.90%	27.30%	27.30%
The Avenue Medical Centre (K81039)	7356	70.20%	10395	2786	10437	99.60%	26.80%	26.70%
Ross Road Medical Centre (K81019)	4117	66.30%	4658	1226	4671	99.70%	26.30%	26.20%
The Symons Medical Centre (K81066)	11613	65.60%	14402	3679	14699	98.00%	25.50%	25.00%
Woodlands Park Surgery (K81015)	3523	70.10%	4132	1032	4162	99.30%	25.00%	24.80%
Easthampstead Surgery (K81087)	5965	66.70%	5729	1173	5747	99.70%	20.50%	20.40%
Giffard Drive Surgery (J82015)	8721	72.70%	9140	1711	9159	99.80%	18.70%	18.70%
Richmond Surgery (J82099)	14621	71.10%	16722	3010	17009	98.30%	18.00%	17.70%
Lee House Surgery (K81046)	7247	70.20%	6265	1115	6302	99.40%	17.80%	17.70%
Farnham Road Practice (K81075)	25914	65.00%	30861	5461	31024	99.50%	17.70%	17.60%
Great Hollands Practice (K81094)	4198	58.30%	3419	604	3419	100.00%	17.70%	17.70%
Ringmead Medical Practice (K81030)	21890	72.60%	24038	3936	24051	99.90%	16.40%	16.40%
Farnham Dene Medical Practice (H81615)	13278	73.40%	13602	2072	14608	93.10%	15.20%	14.20%
Herschel Medical Centre (K81043)	15934	65.60%	16070	2433	16197	99.20%	15.10%	15.00%
Bartlett Group Practice (H81013)	27228	70.30%	38821	5747	42292	91.80%	14.80%	13.60%
Chapel Medical Centre (Y00265)	11527	58.70%	5905	873	5927	99.60%	14.80%	14.70%

Station Road Surgery (H81040)	7976	68.20%	9473	1406	9557	99.10%	14.80%	14.70%
Sheet Street Surgery (K81068)	9476	68.60%	8436	1244	8513	99.10%	14.70%	14.60%
Jenner House Surgery (J82125)	8885	69.90%	10077	1447	10228	98.50%	14.40%	14.10%
Alexander House Surgery (J82120)	9614	71.20%	14315	2051	14385	99.50%	14.30%	14.30%
Wexham Road Surgery (K81005)	4389	63.80%	4671	660	4702	99.30%	14.10%	14.00%
Mayfield Medical Centre (J82181)	9591	65.30%	11463	1551	11982	95.70%	13.50%	12.90%
The Cambridge Practice (J82066)	22217	69.70%	23504	2810	23810	98.70%	12.00%	11.80%
Datchet Health Centre (K81021)	10177	71.90%	10529	1228	10978	95.90%	11.70%	11.20%
South Meadow Surgery (K81630)	13979	67.80%	14332	1605	14352	99.90%	11.20%	11.20%
The Wellington Practice (J82198)	4199	67.60%	4886	529	5207	93.80%	10.80%	10.20%
Lightwater Surgery (H81130)	13021	83.20%	11382	1213	11479	99.20%	10.70%	10.60%
Princes Gardens Surgery (J82178)	10120	66.50%	13636	1365	13728	99.30%	10.00%	9.90%
Camberley Health Centre (H81082)	9758	68.10%	9113	870	9163	99.50%	9.50%	9.50%
Farnham Park Health Group (H81027)	17429	63.00%	19131	1558	19898	96.10%	8.10%	7.80%
Branksomewood H/care Ctr (J82135)	13694	72.00%	9743	694	10011	97.30%	7.10%	6.90%
The Gainsborough Practice (K81059)	10181	69.40%	9536	664	9610	99.20%	7.00%	6.90%
Voyager Family Health (J82067)	17876	70.00%	15766	1097	15784	99.90%	7.00%	7.00%
Runnymede Medical Practice (H81047)	11660	71.00%	11981	813	12097	99.00%	6.80%	6.70%
Park Road Group Practice (H81069)	21422	73.70%	24101	1457	25102	96.00%	6.00%	5.80%
Ascot Medical Centre (K81655)	5645	62.60%	4876	278	4890	99.70%	5.70%	5.70%
The Waterfield Practice (K81001)	14984	70.70%	11779	632	11845	99.40%	5.40%	5.30%
Binfield Surgery (K81060)	11781	75.20%	6823	360	6942	98.30%	5.30%	5.20%
The Orchard Surgery (Y00437)	9906	63.80%	9704	478	9816	98.90%	4.90%	4.90%
The Cedars Surgery (K81036)	10847	68.20%	9317	415	9330	99.90%	4.50%	4.40%
The Sandhurst Group Practice (K81006)	19029	72.50%	17315	722	17363	99.70%	4.20%	4.20%
Claremont Holyport Surgery (K81020)	19253	72.90%	15922	638	16067	99.10%	4.00%	4.00%
Crown Wood Medical Centre (K81656)	5765	74.00%	3426	136	3491	98.10%	4.00%	3.90%
Clarence Medical Centre (K81074)	16470	52.80%	7653	271	7751	98.70%	3.50%	3.50%
Langley Health Centre (K81024)	20620	59.20%	2435	82	26343	9.20%	3.40%	0.30%
Linden Medical Centre (K81018)	10282	70.20%	8838	288	8904	99.30%	3.30%	3.20%
The Border Practice (J82142)	10129	67.80%	14493	347	14687	98.70%	2.40%	2.40%
Rosemead Surgery (K81084)	7103	76.20%	6206	105	6306	98.40%	1.70%	1.70%
Green Meadows Surgery (K81076)	9762	67.40%	8864	145	8887	99.70%	1.60%	1.60%
Park House Surgery (H81039)	6804	75.60%	6970	99	7207	96.70%	1.40%	1.40%
The Oakley Health Group (J82049)	28801	80.50%	30299	278	30328	99.90%	0.90%	0.90%
Fleet Medical Centre (J82110)	14765	78.40%	12919	102	13077	98.80%	0.80%	0.80%
Magnolia House Surgery (K81028)	9191	66.40%	7073	26	7094	99.70%	0.40%	0.40%
Forest Health Group (K81610)	20942	68.80%	16080	48	16116	99.80%	0.30%	0.30%
Kings Corner Surgery (K81010)	7505	74.70%	6148	16	6184	99.40%	0.30%	0.30%